



Foothill  
FARMS®



# Be Ready for What's Next.

**HOW TO PLAN OPTIONS INTO YOUR SCHOOL MENU.**

There are a lot of unknowns for the new school year. Be ready for changes in schedules, locations and participation with versatile, kid-favorite ingredients that easily adapt to your needs.

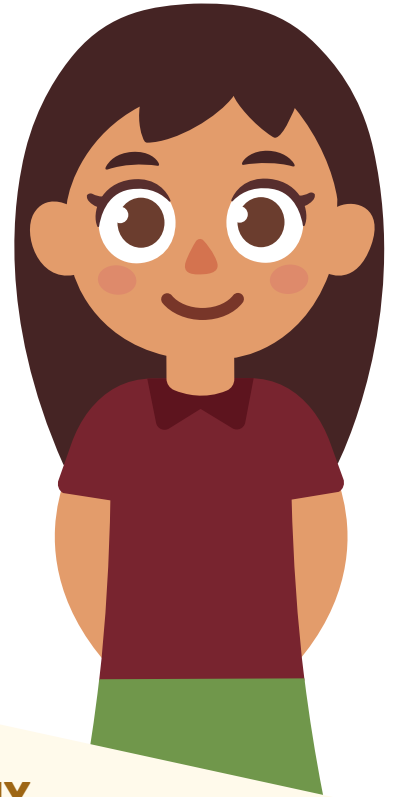


## HOW DO YOU PLAN YOUR MENU FOR CHANGE?

No one knows for sure what this school year will look like. As new COVID-19 learnings become available, administrators are reevaluating procedures and programs nearly every week. In all of this uncertainty, the reliability of the school meals you provide is more important than ever.

**To make sure your kitchen is ready to serve in any scenario, plan for flexibility.**

- Focus on a more simplified menu and shorter menu cycle.
- Maximize your commodities with versatile sauces and seasonings.
- Stock up for remote feeding with portable containers and servingware.
- Prepare for sourcing disruption with backup meal options and ingredients.
- Offer popular flavors to reduce waste caused by fewer custom choices.
- Communicate often to manage expectations with parents, students and staff.



## MAKE SALADS AND HEALTHY SNACKS MORE PORTABLE.

While social distancing may make communal serving areas like salad bars off limits, pre-portioned cups are a portable, personal way to make sure students are still getting their greens, reds and yellows.

### Snacks

- Veggies/Chips · *Carrots, Celery, Broccoli, Whole Grain (WG) chips*
- Protein (optional) · *Ground Beef, Chicken*
- Dip · *Hummus, Ranch, Salsa, Cheese*

### Recipe Examples

- Black Bean Salsa
- BBQ Ranch Dressing
- Hummus & WG Tortilla Chips

### Salads

- Dressing · *Ranch, Italian, Salsa*
- Greens · *Field greens, Iceberg*
- Veggies · *Tomatoes, Cucumbers, Broccoli, Black Beans, Corn*
- Protein · *Chicken, Beef Strips, Hard Boiled Eggs, Tofu*
- Finishing Touches (nuts, seeds, WG croutons)

### Recipe Examples

- Garden Salad
- Spinach Salad
- Fiesta Taco Salad

For more recipe ideas, log on to [foothillfarms.com/recipes.com](http://foothillfarms.com/recipes.com)



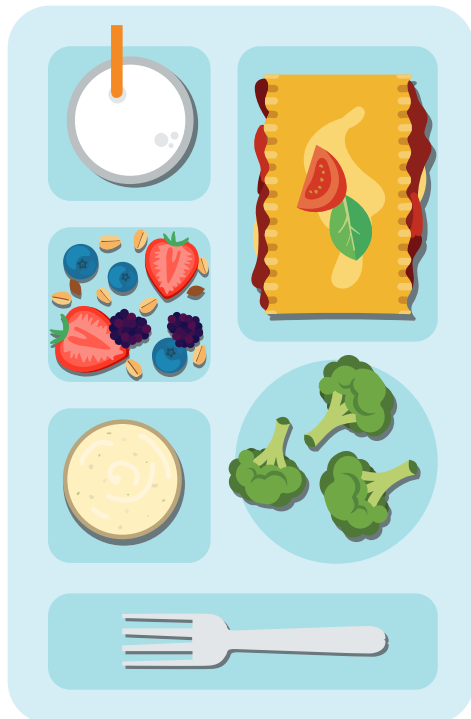
## CREATE ONE-DISH MEALS FOR EASY TRANSPORT.

As your school moves to remote dining, such as classrooms and outdoors, portability will be key. Eliminate the need to juggle multiple items with all-in-one bowls served in spill- and leak-resistant containers.

- Grain · *Quinoa, Rice, Noodles, Stuffing*
- Veggie · *Peppers, Broccoli, Chiles, Onions*
- Protein · *Ground Beef, Chicken, Beef Strips, Tofu*
- Sauce/Seasoning · *Enchilada, Gravy, Alfredo, Cheese*

### Recipe Examples

- Chicken Alfredo & Broccoli Bowl
- Bare Burrito Bowl
- Cuban Style Picadillo Bowl
- Chicken Stuffing Bowl
- Chicken Enchilada Bowl
- Chicken & Mashed Potato Bowl
- Meatball Bowl
- Cilantro Lime Quinoa Bowl
- All Day Breakfast Potato Bowl



## BALANCE FEWER CHOICES WITH MORE FAVORITES.

Without the lunch line, kids miss out on making their own choices. Limited options mean more waste from picky eaters. To make sure everyone gets something they'll like, feature your most popular dishes more often.

- Entrée · *Fettucini Alfredo, Lasagna*
- Veggie/Sides · *Broccoli, Salad, Veggie Sticks, Beans*
- Seasonings/Sauces/Dips · *FHF seasonings, FHF Sauces & Gravies*
- Dessert · *Canned Fruit with Oat Crisp Topping*

### Recipe Examples

- Chicken Alfredo & Broccoli
- Chili with Ground Beef
- Turkey Chili
- Chicken Nachos with Mexican Rice
- Beef & Bean Enchiladas
- Cheese Enchilada Mini Pierogies
- Cilantro Lime Rice
- Macaroni & Cheese with Hot Dog Bites
- WG Oat Crisp (*Apple & Cranberry, Peach, Sweet Potato*)

CATEGORY	PRODUCT	MANUFACTURE CODE	CASE PACK	UPC	DOT CODE	SERVING PER CASE	CALORIES	TOTAL FAT (G)	SAT FAT (G)	TRANS FAT	SODIUM (MG)	TOTAL CARB (G)	PROTEIN (G)	GLUTEN FREE	NO MSG	VEGETARIAN*	VEGAN
SALAD DRESSINGS	Foothill Farms® Ranch Dressing & Seasoning Mix - No MSG	V402-JA190	18/3.2 oz	10072058001404	436367	2304	0	0	0	0	45	0	0	•	•	•	
	Foothill Farms® Ranch Dressing & Seasoning Mix	V400-JA190	18/3.2 oz	10072058001015	436358	2304	0	0	0	0	100	0	0	•			•
	Foothill Farms® Italian, Caesar, Vinaigrette Dressing & Seasoning Mix	V408-EL190	12/7.6 oz	10072058004009	436379	1536	5	0	0	0	190	1	0	•	•	•	•
SAUCES	Foothill Farms® Classic Red Enchilada Sauce Mix With Guajillo Chiles	V532-F6190	8/8 oz	10072058609648	549402	280	20	0.5	0	0	160	4	0	•		•	•
	Foothill Farms® Spaghetti/Pizza Sauce Mix	V415-AN190	6/11.25 oz	10072058609259	547204	444	15	0	0	0	290	3	0	•	•	•	•
CHEESE SAUCES	Foothill Farms® Deluxe Alfredo Sauce Creamy Parmesan Instant Mix	575T-T0700	8/14 oz	10000645005757	430376	304	40	1.5	1	0	330	6	1	•			
	Foothill Farms® Classic Alfredo Sauce Creamy Parmesan Instant Mix	090T-T0700	8/19 oz	10000645000905	430367	320	60	2.5	2	0	380	7	1	•			
SEASONINGS	Foothill Farms® Charro Style Bean Seasoning Mix With Other Natural Flavors	V461-F6190	12/3.5 oz	10072058608948	560379	288	15	0	0	0	35	3	0	•		•	
	Foothill Farms® Salsa Seasoning Mix	V425-H5190	12/5.8 oz	10072058601093	444796	1104	5	0	0	0	90	1	0	•	•	•	•
	Foothill Farms® Premium Taco Seasoning Mix	V411-D9190	6/9 oz	10072058609365	547200	300	15	0	0	0	290	3	0	•	•	•	•
	Foothill Farms® Select Taco Seasoning Mix	V413-D9190	6/6.6 oz	10072058609372	547058	300	10	0	0	0	350	2	0	•	•	•	•
	Foothill Farms® Sloppy Joe Seasoning Mix	V416-AN190	6/11.44 oz	10072058609266	547205	342	20	0	0	0	300	4	0	•	•	•	•
	Foothill Farms® Chili Seasoning Mix	V417-A1190	6/8.05 oz	10072058609273	547580	174	25	0	0	0	220	5	1			•	•
RICE SEASONINGS	Foothill Farms® Cilantro Lime Rice Seasoning Mix Naturally Flavored	S162-F6190	10/6 oz	10072058608962	560380	240	20	0	0	0	480	5	0	•		•	•
	Foothill Farms® Mexican Rice Seasoning Mix (Red)	V419-AL190	6/11 oz	10072058609624	549548	186	30	0	0	0	440	7	1	•		•	•
	Foothill Farms® Spanish Style Rice Mix (Red)	R213-D5190	6/36 oz	10072058609426	546402	114	180	1	0	0	520	40	4	•		•	•
	Foothill Farms® Whole Grain Spanish Style Brown Rice Mix (Red)	R219-D5190	6/36 oz	10072058609754	549806	114	190	1.5	0	0	540	40	4	•		•	•
GRAVY MIXES	Foothill Farms® Chicken Flavor Gravy Instant Mix With Other Natural Flavors	G406-F6700	8/14.1 oz	10072058609396	549152	552	20	0	0	0	160	4	0	•	•		
	Foothill Farms® Brown Gravy Instant Mix	G405-F6700	8/14.1 oz	10072058609389	549285	552	20	0	0	0	210	5	0	•	•		
STUFFING	Foothill Farms® Whole Grain Stuffing Mix (Seasonal)	T530-C1190	12/28 oz	10072058615069	608786	276	130	1	0	0	370	25	5				

\*Vegetarian = Excludes meat, poultry, seafood and eggs, but does include dairy/milk.

## YOU'VE GOT THIS.

When it comes to taking care of your students, there's nothing you can't handle. The Foothill Farms® brand is proud to support you as you take on the new school year. For more information about our versatile sauce mixes, seasonings, dressing mixes, sides and gravy mixes, visit [www.foothillfarms.com](http://www.foothillfarms.com).



FIND MORE INFO AND RECIPES  
AT [FOOTHILLFARMS.COM](http://FOOTHILLFARMS.COM)



CONTACT US AT 800.442.5242 OR  
[FOOTHILLFARMS.COM/CONTACT](http://FOOTHILLFARMS.COM/CONTACT)

© 2021 Kent Precision Foods Group, Inc.  
Foothill Farms® is a registered trademark  
of Kent Precision Foods Group, Inc.